

# Sinilink XY-WBT Bluetooth Decdeboard Stereo Bluetooth audio module WIFI The timing clock is automatically aligned

XY-WBT XY-WBT XY-WBT XY-WBT XY-WBT XY-WBT XY-WBT XY-WBT XY-WBT XY-WBT XY-WBT XY-WBT

## WiFi timing clock + Bluetooth audio player

Bluetooth 5.0 Stereo output  
Lossless sound quality

6 groups of alarms can be set,  
8 levels of brightness adjustment

- ▶ Equipped with global time zone,
- ▶ can be operated without network
- ▶ Automatic network time service,
- ▶ accurate time

Mobile APP control support Android  
and IOS system Support remote firm-  
ware upgrade.

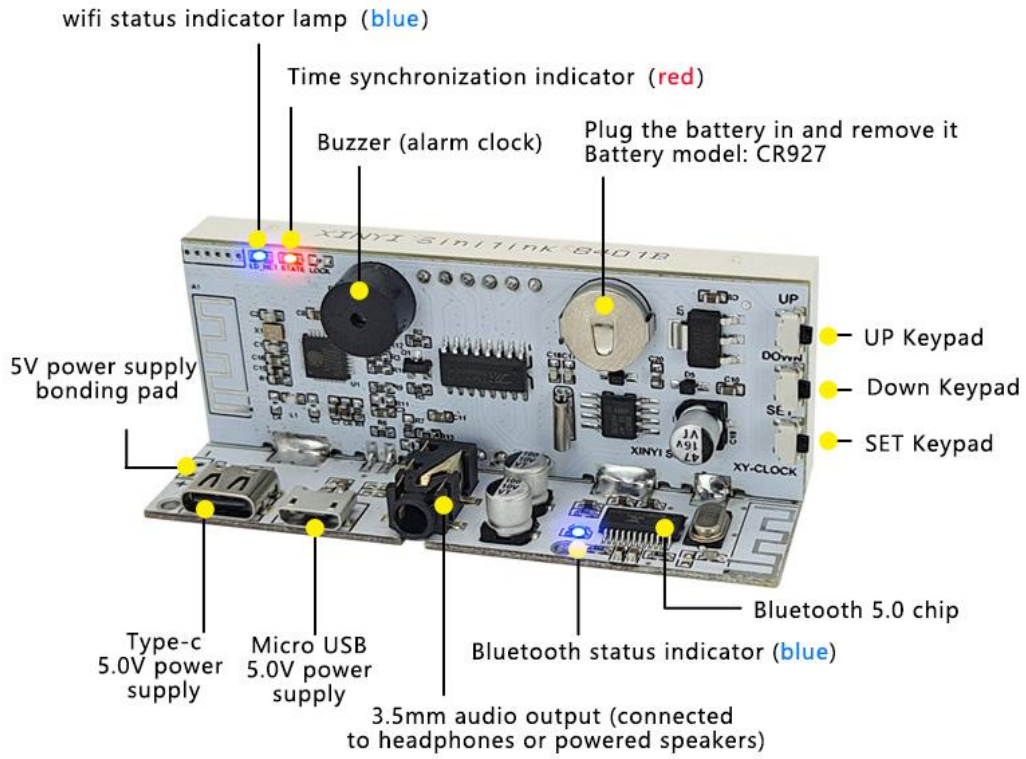


## 目录

Sinilink XY-WBT Bluetooth Decdeboard Stereo Bluetooth audio module WIFI The timing clock is automatically aligned.....	1
目录.....	1
1. function Introduction.....	3
2.Wifi clock description and key operation.....	4

2. Function display diagram .....	5
4. product size .....	6
5.Product packaging display diagram .....	7
6. Product drawing.....	8
7. APP interface introduction.....	9
8. How to connect your mobile phone to Bluetooth.....	10
9. How to distribute the distribution network.....	11
10. Internet considerations.....	13
11. How to download a mobile APP .....	14

# 1. function Introduction



Tip: Only one power supply can be selected at a time

## 2.Wifi clock description and key operation

### product highlights

- 1.Mobile APP control supports remote firmware upgrade for Android and iOS systems
- 2.After successful pairing, the time zone will be automatically sent to the product. You can set the current time zone. The time format is 12,24 hours
- 3.Using 0.8 inch digital tube, time + date +6 sets of alarm clock +8 level brightness adjustment
- 4.With the global time zone, no matter you are in any country, the time is the same as that of this country. Automatic network time synchronization is carried out every hour. As long as the network is connected continuously, the time synchronization with the country or region will be maintained. The measured error is generally within 1 second (mainly caused by network delay)
5. Equipped with high-precision clock chip and memory battery, it can ensure the travel time accuracy to the greatest extent without network or power supply.
- 6.If the automatic screen stop function is turned on, there is no key to operate the automatic screen stop function within 10 seconds.
- 7.The set parameters are saved automatically after power failure.

If the product is loaded in the vehicle, the network time service can also be realized. The specific operation is as follows:  
Turn on the mobile hotspot and connect the mobile hotspot in AP mode. After the connection is successful, the time will be synchronized with the mobile time. As long as you don't turn off the mobile hotspot or change the name of the mobile hotspot, the product will automatically connect with the mobile hotspot every time you drive, so as to realize automatic time synchronization and ensure accurate time.

### Key operation

- 1.**Adjust brightness:**  
In the operation interface, press the up / down button to adjust the brightness.
- 2.**Set time**  
In the operation interface, long press the set button for 1 second to enter the time adjustment interface, short press the set button to switch the parameters to be modified (time, month, day, year), short press the up / down button to modify the parameters; after modification, long press the set button for 1 second to exit the time adjustment interface.
- 3.**set clock**  
In the operation interface, long press the set button for 3 seconds to enter the alarm setting interface, short press the set button to switch the parameters to be modified, and short press the up / down button to modify the parameters; after modification, long press the set button for 1 second to exit the time adjustment interface;  
Alarm parameter description: a1.on // a1.of A1: alarm number 1-6, a total of 6. On / of: alarm status, on alarm on; of alarm off.
- 4.**Turn sleep mode on / off**  
In the operation interface, long press the up button for more than 1 second to turn on / off the sleep mode; LP: on to start the sleep mode (no key operation within 10 seconds, automatic screen rest; operation of any key to wake up)
- 5.**Turn on / off rotating display (month, day and time display in turn)**  
Press the down button for more than one second in the running interface to turn on / off the display in turn.

## 2. Function display diagram

Active speakers become Bluetooth speakers,  
and there is also a WIFI timing clock. Is it good?



## 4. product size

### Product size chart

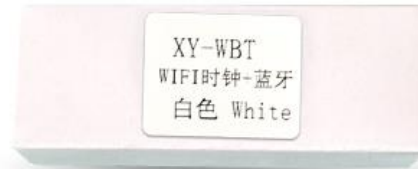


### Free 3M adhesive tape



## 5.Product packaging display diagram

### Independent paper packaging



Weight: 32g



## 6. Product drawing





# 7. APP interface introduction

**Control device**

- Time format 12 hours/24 hours
- Sleep on/off (After turning on the digital tube Turn off the screen after 1 minute)
- Turn off the alarm after the alarm goes off
- Backlight brightness adjustment (Level 1-8)
- Can be shared by multiple people
- Firmware version Remote firmware upgrade
- Sync with phone time zone
- 6 groups of alarms can be set

Click "Bluetooth" to enter The Bluetooth connection interface is as follows:

**Bluetooth control**

Search Bluetooth connection sinilink-APP

The successful connection interface is as follows:

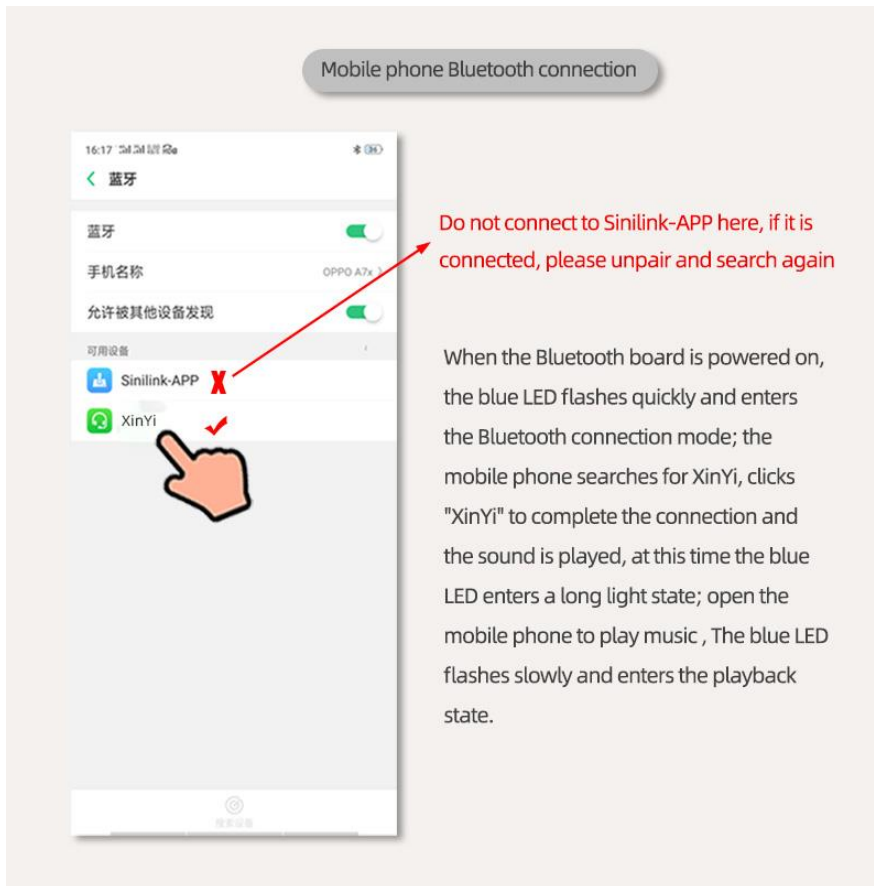
**Bluetooth control**

Click To Disconnect

Audio switch: TF, USB, BT, Audocard, AUX

EQ: NORMAL, ROCK, POP, CLASSIC, JAZZ, COUNTRY

## 8. How to connect your mobile phone to Bluetooth



Make sure that Bluetooth enters Bluetooth connection mode- -blue LED flash, AUX do not insert, can not enter Bluetooth connection state after insertion

Search for Bluetooth on the mobile phone, found "complete the connection after XINYI", click, accompanied with the prompt sound. After the successful connection, the LED enters the long beam state, open the mobile phone music software to play music, blue LED flash, enter the playing state;

When the phone searches for Bluetooth, come out. "Sinilink-APP", don't connect this Bluetooth here, this is connected inside the APP. If connected, please cancel the pairing and search again, otherwise it will cause you unable to connect inside the phone APP.

## 9. How to distribute the distribution network

- 1) In the operation interface, press SET button for more than 5 seconds to enter Touch pairing state, and press SET button again for 5 seconds to enter AP pairing state.
- 2) Touch mode: Blue light interval 1 second flash 4 under  
AP mode: Blue lamp continues to flash quickly
- 3) Enter the Touch pairing mode by default. If the pairing fails, please select the AP mode, connect the WIFI network with a "Sinilink Product", password of "12345678" and operate according to the APP prompt.

# Product networking steps

## First step



Click on the small plus sign

## Second step



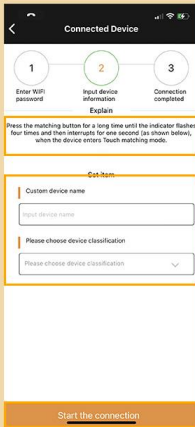
Select the pairing mode. If it is a WIFI device, the "Touch" mode is preferred. If the pairing fails, please select the "AP" mode for pairing; if it is a Bluetooth device, click "Bluetooth device" to pair and connect.

## Third step



During the pairing process, the WIFI network must be 2.4G, and the 5G network cannot be paired. (If your WIFI router 2.4G and 5G are network merged, please reconfigure the router, separate it, and select 2.4G network.)

## Fourth step



The product enters Touch by default after power-on Pairing mode.

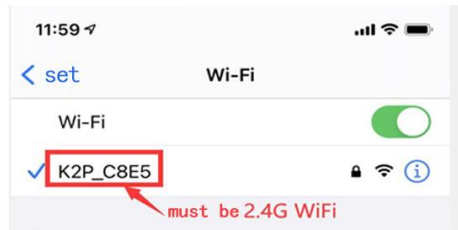
Customize device name and classification.

Click "Start Connection".

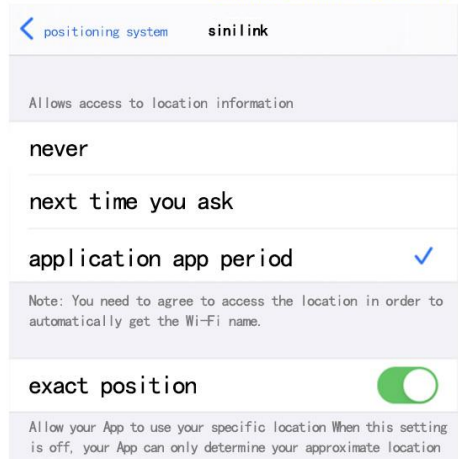
# 10. Internet considerations

## Product connection network matters needing attention

1. Make sure the phone is connected to a personal WiFi network, must be 2.4Ghz frequency band, 5Ghz frequency band Can't match. If your router is 2.4Ghz frequency band and 5Ghz frequency band amalgamative, Reconfigure the router, separate it, choose 2.4G frequency band pairing .

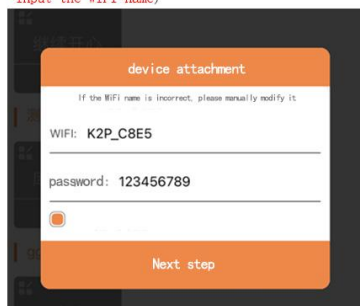


2. Make sure "Xinyilian" APP Location permission already on .



3. Let the product enter the pairing state, the blue light flashes 4 times every second(Touch Pair mode), If Touch Matching failure, Please select AP mode for pairing and operate according to the APP prompts.

4. Add device interface need to confirm whether the App has successfully obtained the WiFi name. And make sure the WiFi password you enter is correct. (If the WiFi name fails to get, please recheck whether the location permission of the APP is turned on. If the permission is already turned on, you can try to manually input the WiFi name)



5. Keep your phone and device as close to your router as possible.

# 11. How to download a mobile APP

扫码下载APP



Scan Download APP

Scan the code to download APP, foreign customers please download in Google Market, hunt for 'sinilink' download.