

### APP download address:

Apple IOS: search in the Apple store: sinilink

Android:

[https://m.pp.cn/detail.html?ch\\_src=pp\\_dev&appid=7921907&ch=default](https://m.pp.cn/detail.html?ch_src=pp_dev&appid=7921907&ch=default) or  
download from the official website: <http://www.sinilink.com/release.apk>

Or download the APP on your mobile phone: PP Assistant, search for 'sinilink' to download in PP Assistant or scan the code to download the APP

(Note: Android major mainstream markets have been put on the Xiaomi market, and the Huawei market has recently been put on the shelves)

For foreign customers, please download from Google Market, search for 'sinilink' to download

### Computer client software download address:

<http://www.sinilink.com/download/tools/Sinilink-Setup.exe>

**100W+100W** Dimensional sound  
Bluetooth digital power amplifier board

**HIFI Version 2.0**

Active speaker output  
Passive speaker output

AUX Import  
Bluetooth  
USB Play  
Line in  
HIFI sound quality

**Ultimate Edition XY-AP100L**

**PRESENTED:**  
XIN YI LIAN  
MOBILE PHONE APP  
CONTROL SUPPORT  
ANDROID AND IOS

Adopt the rotary encoder for the high-end speakers with infinite tuning feel smooth one-button start and stop.

## AP series 100W Bluetooth power amplifier board selection table

Model	XY-AP100L Flagship version	XY-AP100H Extreme Edition
Picture		
Character	Designed by efficient Class-D stereo amplifier, with excellent audio performance, good distortion and anti-pop function, Sound mellow, voice permeability, superior sound	Designed by efficient Class-D stereo amplifier TPA3116D2, with super high fidelity (HIFI) and stronger driving ability
SinilinkAPP	YES	YES
Supply	DC8-26V/3A	DC8-26V/3A
Audio Input	Bluetooth+AUX+U disk+USB soundmax	Bluetooth+AUX+U disk+USB soundmax
Volume control	Rotate 360 degrees by encoder	Rotate 360 degrees by encoder
Audio output	Speaker*2+3.5mm Audiojack	Speaker*2+3.5mm Audiojack
Output power	100W*2	100W*2
Output filter	NO filter	Professional audio LC filter
Protections	overcurrent, short circuit, overtemperature protection and electrostatic protection	over temperature, overvoltage, undervoltage, DC-detect and short circuit protection and electrostatic protection
Thermal solution	Heat sink and shell	Heat sink and shell
Speakers	4-8Ω, 30-300W	2-8Ω, 30-300W
Size(with shell)	58mm*58mm*18mm	60mm*60mm*20mm
Weight (including packaging)	68g	85g

Ultimate Edition  
**XY-AP100L**



## Dimensional sound Bluetooth digital power amplifier board

100W+100W

—  
USB Play

—  
AUX Import

—  
LINE IN

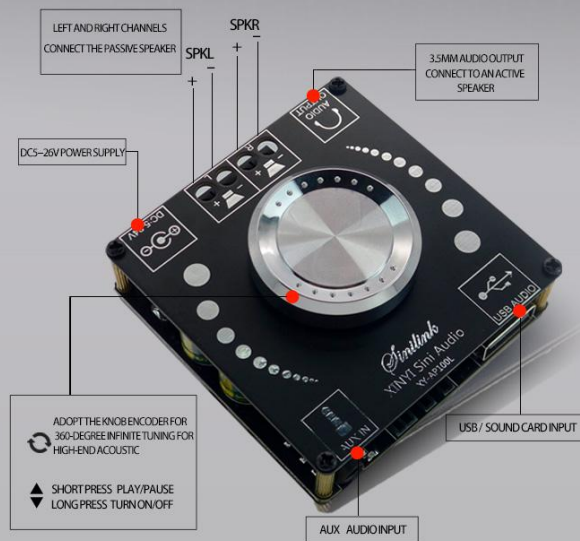
—  
HIFI SOUND QUALITY

—  
ACTIVE SPEAKER OUTPUT

—  
PASSIVE SPEAKER OUTPUT



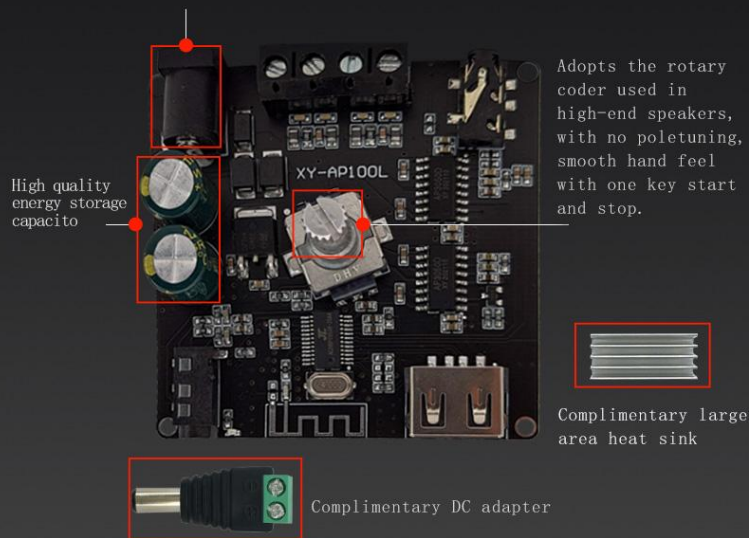
## EXQUISITE APPEARANCE STRONG PERFORMANCE



USB the file system must be FAT32 with a maximum support of 32GB

## DISPLAY OF BARE PLATE CONSTRUCTION

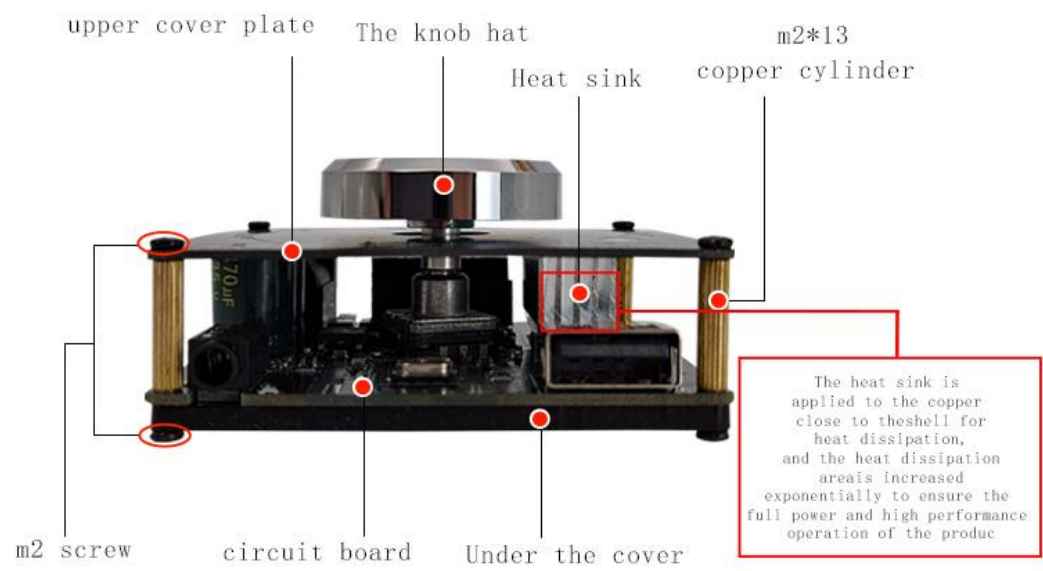
High quality all-copper DC plug has long life



The bare board shows the real material!



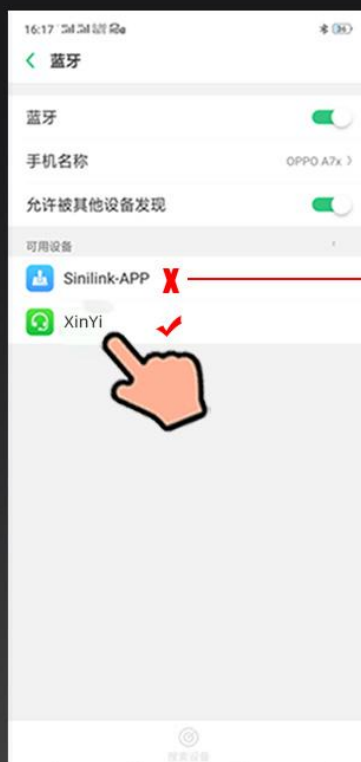
# PRODUCT INSTALATION AND DIMENSION FIGURE



## TO CREATE THE MYTH OF BLUETOOTH HEADSET

Trademark: XINYI Sini Audio	Model: XY-AP100L
Bluetooth Core: 5.0	Fit the horn: 20W~300W 4Ω 8Ω
Distance: 15m (unabgeschirmt)	Number of tracks: left and right dual tracks (stereo)
Power supply voltage :DC:5~26V(the higher the voltage, the greater the output power)	
Protection mechanism: power reverse connection protection, short circuit protection, self - recovery overheating protection	
12V→8Ω/12W+12W, 4Ω/22W+22W	
19V→8Ω/28W+28W, 4Ω/ be greater than55W+55W	
22V→8Ω/37W+37W, 4Ω/ be greater than72W+72W	
24V→8Ω/72W+72W, 4Ω/ be greater than100W+100W	
Note: the output power of the power supply should be greater than the output power of the power amplifier, otherwise it will affect the sound quality	
Free cool features: Xin Yi Lian mobile phone APP control supports Android and IOS systems	

## PRODUCT SIZE CHART / PRODUCT SIZE CHART



Do not connect to Sinilink-APP here, if it is connected, please unpair and search again

When the Bluetooth board is powered on, the blue LED flashes quickly and enters the Bluetooth connection mode; the mobile phone searches for XinYi, clicks "XinYi" to complete the connection and the sound is played, at this time the blue LED enters a long light state; open the mobile phone to play music, The blue LED flashes slowly and enters the playback state.

Give away cool features

# Mobile APP control

Support Android Apple system

  
**Sinilink**  
欣易联



APP control

## APP visual operation play mode

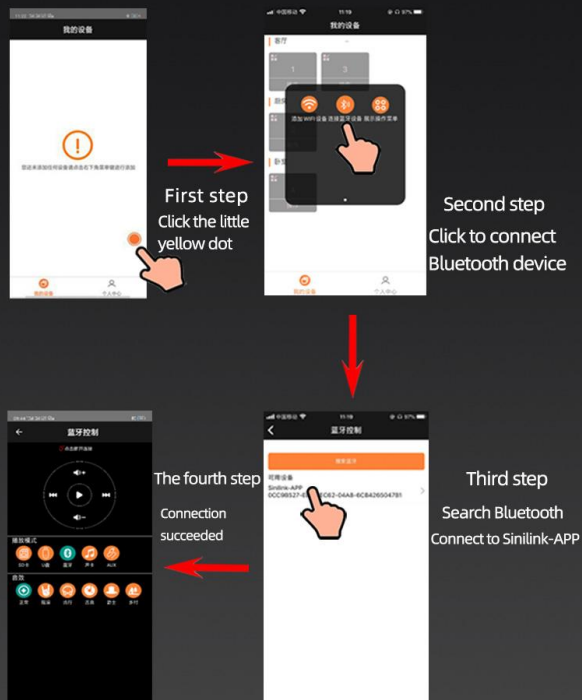
Volume Sound Effect Up and Down Song Control Play Pause Play Mode



More functions will be upgraded  
in the future, so stay tuned

## Steps to connect Bluetooth via mobile APP

**Note:** When using the APP, you must turn on all the APP permissions in the phone settings, otherwise some phones, compatibility issues will occur, causing Bluetooth to fail to connect.



Turn on the location information of the phone when using the APP





#### ⚠ Precautions for use:

##### Precautions for using APP

When using the APP, the Sinilink-APP cannot be searched. Check whether the Sinilink-APP is searched in the phone settings-Bluetooth interface. If it is searched (**don't connect here**), it means that the permission of the APP is not activated or the location information of the phone is not opened (**very important**), please go to the phone settings to open all the permissions of the APP and then reopen the APP search; if the Sinilink-APP is not searched in the phone settings-Bluetooth, please confirm whether the Bluetooth power amplifier board is powered on and enter the Bluetooth mode; if it is powered on and enters Bluetooth Please adjust the angle of the Bluetooth power amplifier board and search again.

##### Audio input mode switch

When this product is not mounted with any external audio device, the power-on default is Bluetooth mode; if the external playback device is mounted, such as inserting an AUX or U disk, the power-on default is AUX or U disk playback mode; the playback process follows the priority of the rear plug-in device In principle, for example, if you insert AUX during Bluetooth playback, you will immediately switch to AUX playback; the audio mode can also be switched by APP, which is very convenient.

When AUX is playing, try to choose AUX cable with shielding layer to reduce noise.

The MP3 format is recommended for U disk playback. The sampling rate of the WAV format must be within 44100Hz. If the sampling rate is too high, the playback may not be possible.

When using the USB sound card function, you can connect the computer with a USB data cable without installing any drivers. Most computer systems will switch the USB sound card by default. If it can't switch automatically, you can manually select the switch.

##### Power selection

This product has a power supply range of 5-26VDC and is compatible with standard 5.5-2.1/2.5 power adapter plugs. It is recommended to use a 12V/24V standard power adapter with a current output of 4A or more.

1) The size of the power supply is related to the power of the speaker used. For example, if you use a 4 ohm 100W speaker and a 24V power supply, the current should be at least 6A. If the current is too small, the sound may be stuck. Reduce the volume and reduce the output power to solve this problem .

2) The power supply voltage cannot be higher than 26V, higher than 26V, the circuit board will be burned.

3) If the horn does not play when the power is turned on, but keeps making a ticking sound, which is caused by insufficient power supply, just increase the power supply.

##### Speaker selection

The power amplifier of this product can continuously output 100W\*2 power when driving 4Ω speakers, 50W~300W speakers can be driven, and 4ohm or 8ohm speakers are recommended. If the power is less than 100W speakers, appropriately reduce the power supply voltage (such as 21V power supply) or reduce the playback volume; the greater the power supply voltage of speakers greater than 100W, the better (within 26V).

If there is a "hiccup" phenomenon when playing music speakers, first consider the insufficient power supply and use a larger power supply; second, consider the power amplifier overheat protection, strengthen heat dissipation or reduce the playback volume.

##### Signal problem

This product uses a PCB antenna, and the visible distance of the connection can reach 15 meters without obstruction. If you can't find Bluetooth when you use it, or you can't connect to Bluetooth, consider the signal problem.

1) Keep away from the router when using it.

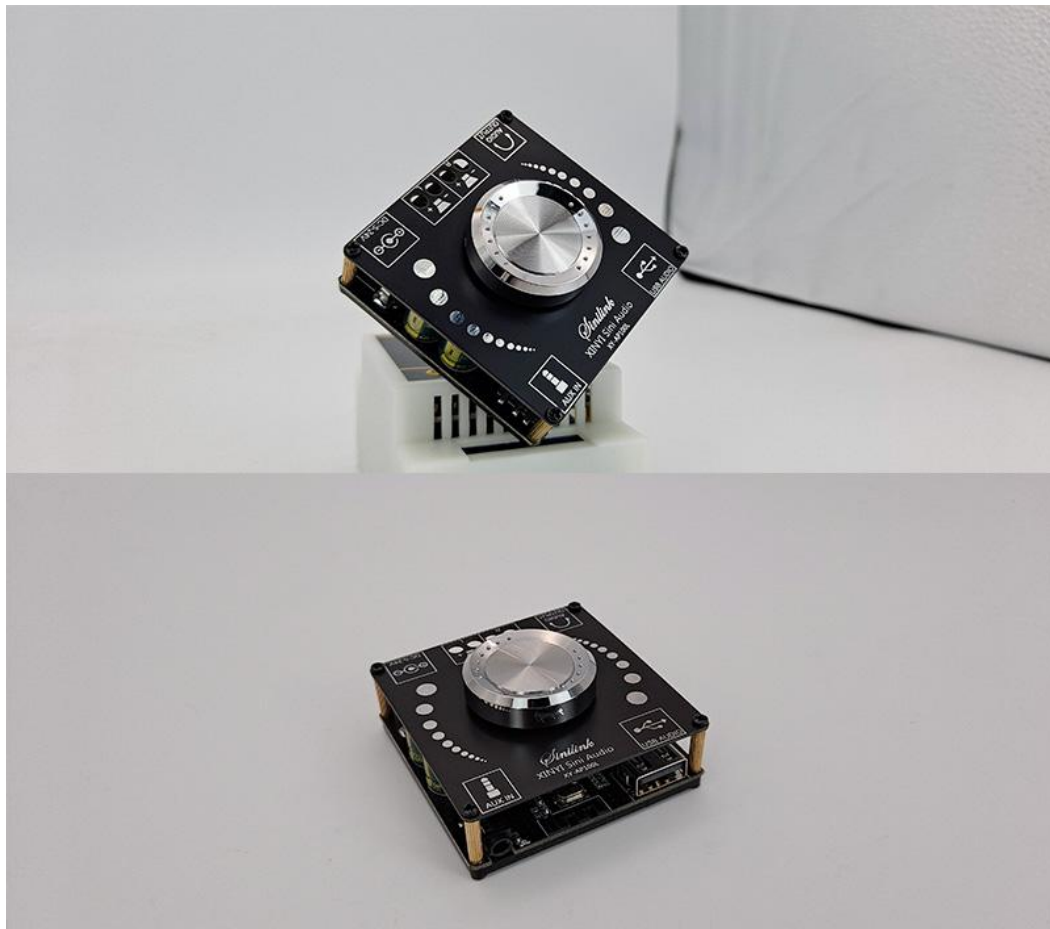
2) Avoid using it on the metal table, which will affect the PCB antenna signal.

3) If you refit the speaker, if it is a metal shell, you must lead the antenna out of the shell. The metal shell will shield the signal.

Independent packaging of paper shell



Weight: 68g



# Powerful features of Sinilink APP

SINILINK APP BRAND NEW UPGRADE

Modify  
Bluetooth  
name

Set  
Bluetooth  
password

On/off  
prompt  
tone



## Full-featured Complete in one machine

Set the Bluetooth name of each product arbitrarily  
Easy identification of multiple products

